

CERTIFICATE OF LOCATION OF GOVERNMENT CORNER

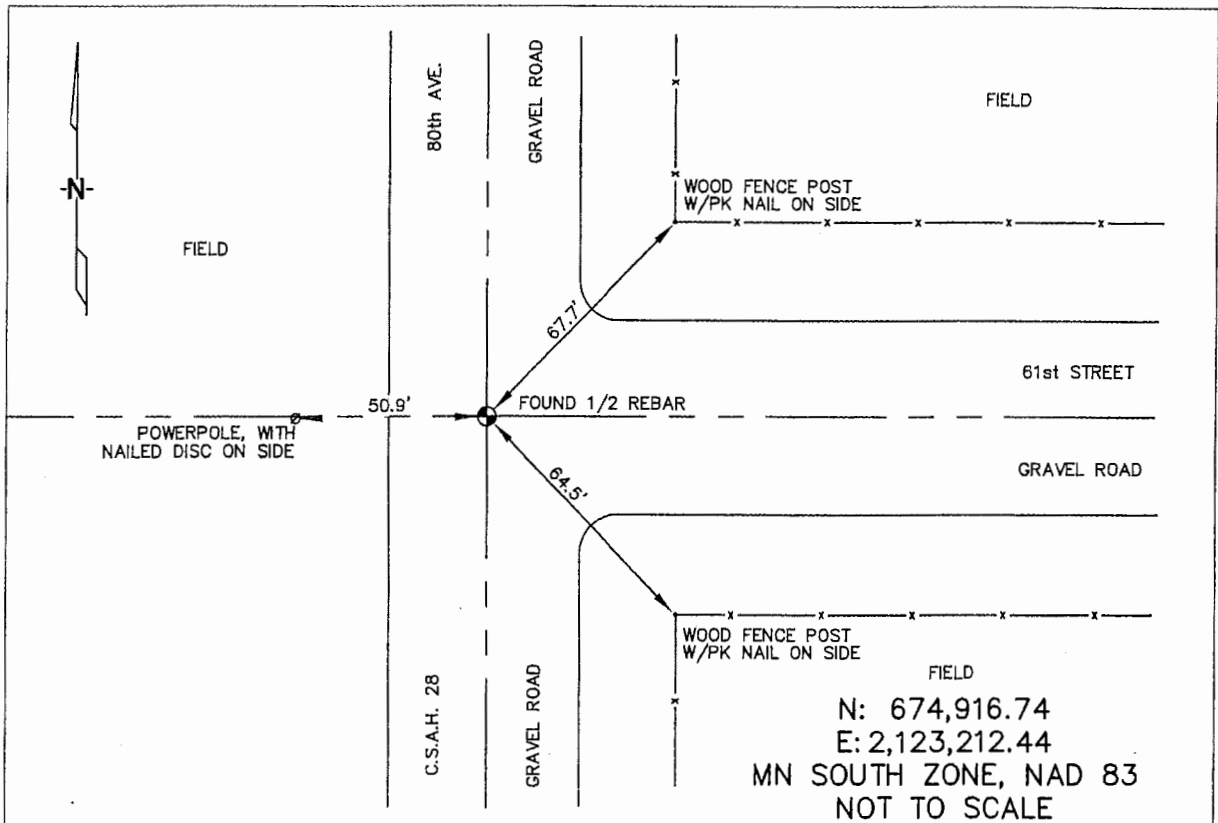
NORTHEAST Corner of Section 5, Township 105N, Range 42W, 5TH P.M.

STATE OF MINNESOTA, County of MURRAY

At the corner location shown on the sketch :

- On 3/21/2006 found A 1/2" REBAR AT INTERSECTION OF
GRAVEL ROADS.
 left monument as found, lowered monument, removed monument (explain)
- On _____ set _____

Sketch of reference ties



Statement of evidence relative to this corner location is on back page

I hereby certify that this document and the data contained herein was prepared by me or under my direct supervision.

Thomas V. Zeff 5/18/06
 Thomas V. Zeff Date
 Registration No. 44563

- Land Surveyor, Professional Engineer
 County Surveyor, County Engineer

OFFICE OF THE COUNTY RECORDER

County of _____

SEP 28 2006

I hereby certify that this document was filed in the Co. Recorders office at _____ .M. on the day of _____ A.D. , 20

County Recorder James V. Johnson
 By _____, Deputy

DOCUMENT NO. _____

STATEMENT OF EVIDENCE:

NORTHEAST CORNER, SECTION 5, T. 105 N., R. 42 W.,
MURRAY COUNTY, MINNESOTA

1861 D.H. Wellman & S.S. Smoot, US. Deputy Surveyors, monumented corner.

? Date: Murray Co. found stone.
Ties: SE-44.4' to tack in fence post corner;
NE-46.0' to tack in fence post corner;
W-32.6' to tack in fence post, on line.

3/21/2006 Ulteig Engineers, Inc., Survey Crew, Dennis Lavallie Party Chief,
found a 1/2" rebar in the C/L intersection of the gravel roads.
Ties: NE-67.7' to PK nail NE face of fence post;
SE-64.5' to PK nail in SE face of fence post;
W-50.9' to nail & disc in W face of power pole.